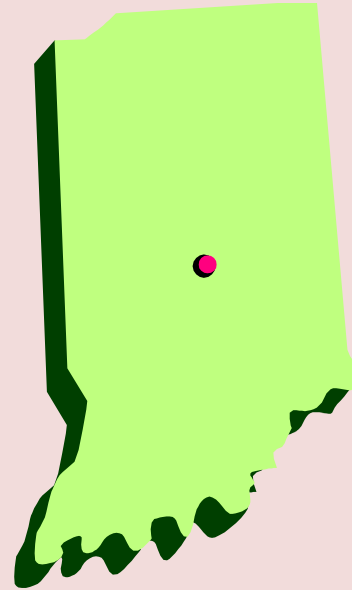


Indiana History



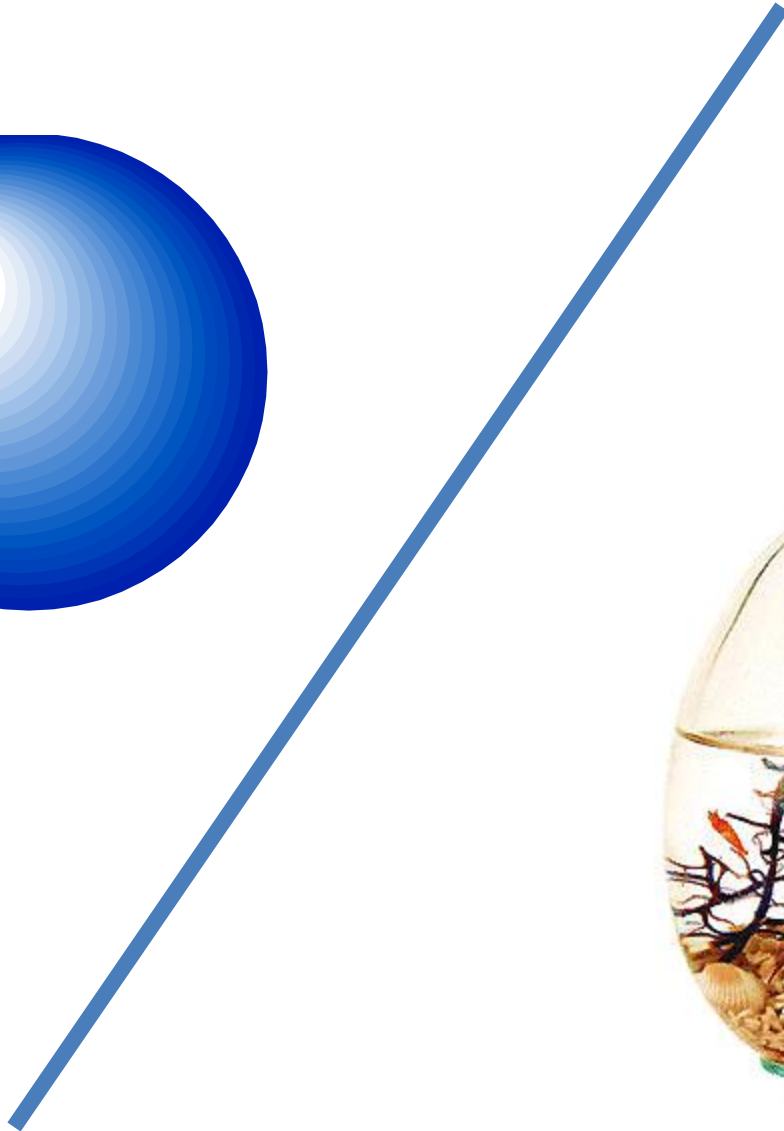
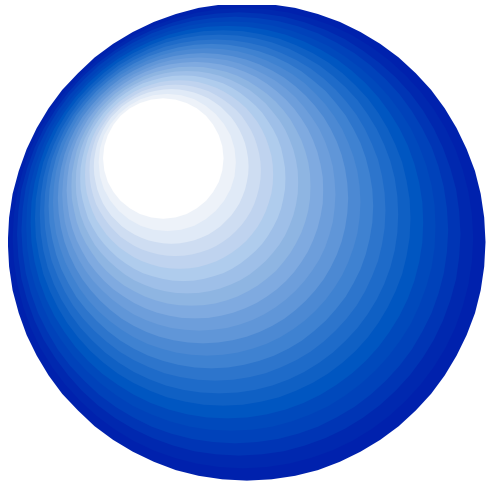
Physical Systems in Indiana



Today's Objectives:

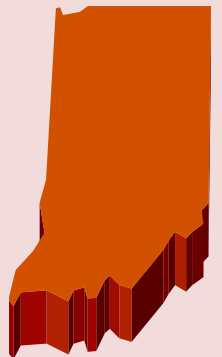
- Physical Systems: Describe Indiana's landforms (lithosphere), water features (hydrosphere), and plants and animals (biosphere)

Sphere



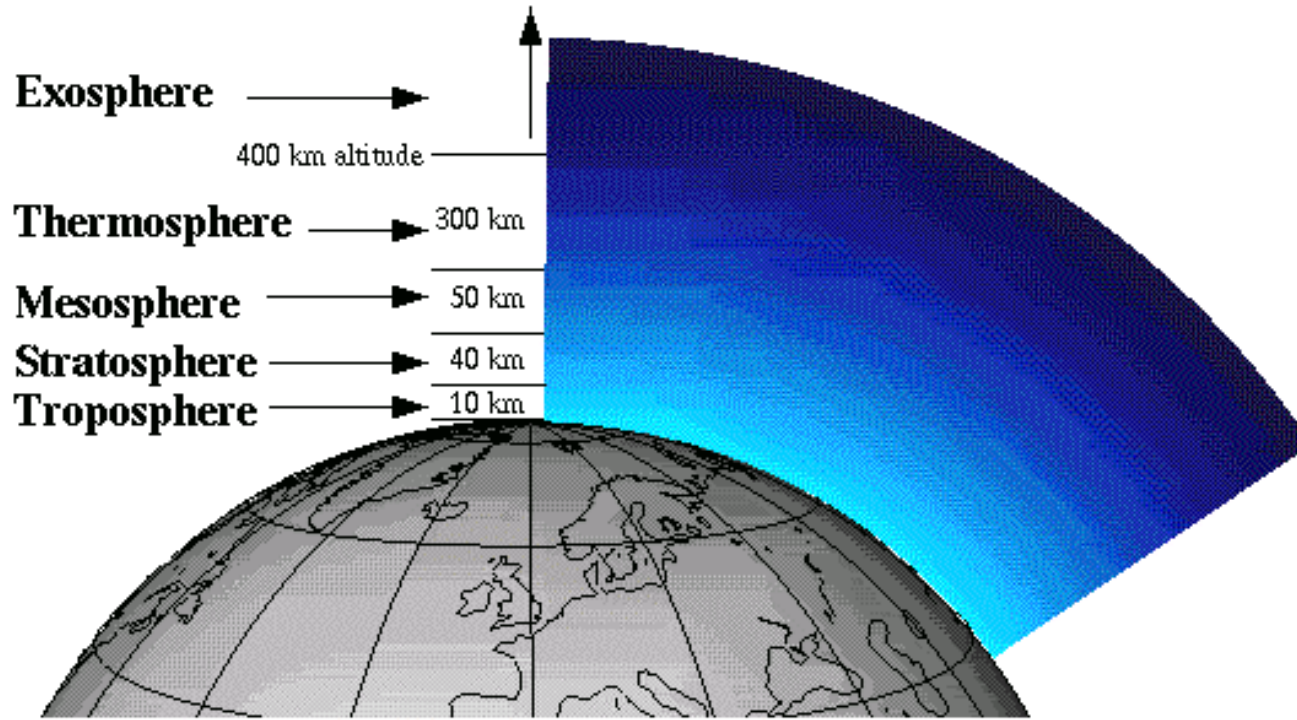
Spheres

- There are four types of spheres that affect life in Indiana:
 1. atmosphere
 2. hydrosphere
 3. biosphere
 4. lithosphere



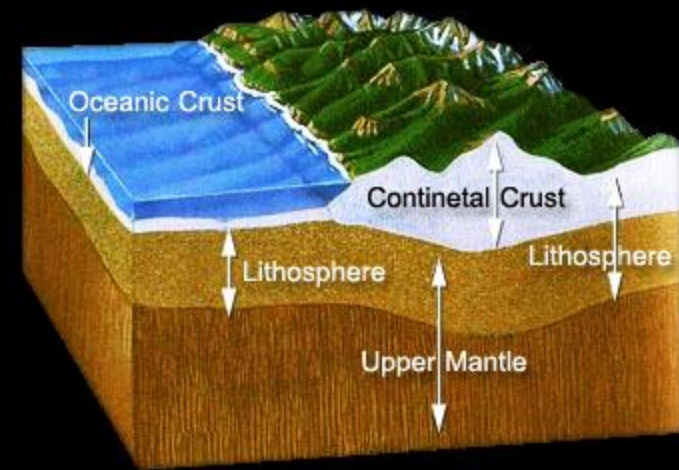
Atmosphere

- The gases that surround Earth
- Includes the air we breathe



Lithosphere

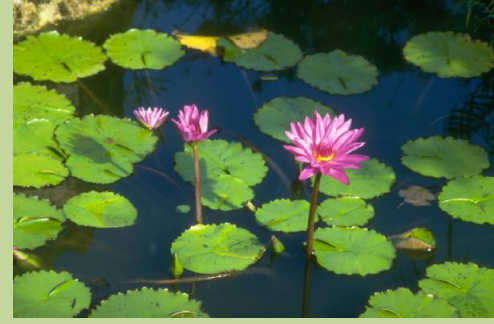
- The soil and rock that makes up the Earth's surface



Lithosphere

Biosphere

- All of the plants and animals that live on Earth



http://www.youtube.com/watch?v=FLO_wJPQT-Y

Hydrosphere

- The water on the Earth's surface
- Includes the water in the water cycle (precipitation, evaporation, condensation)



http://www.metacafe.com/watch/1955646/unfiltered_sewage_water_dumped_in_indianapolis_river_pt_1/

Think About It!

All of these systems effect each other



Build Your Own Virtual Model

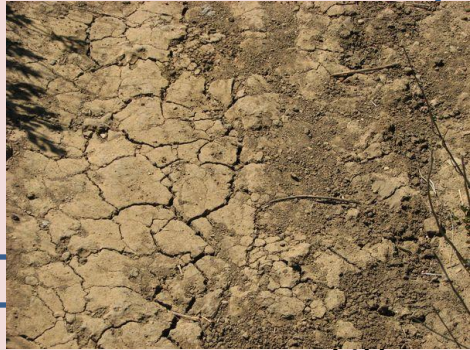
- Go to your own screen
- Drag and move the items on the screen to build your own model
- Make sure you include the atmosphere, lithosphere, biosphere, and hydrosphere

Atmosphere



Biosphere

Hydrosphere



Lithosphere

Atmosphere

Biosphere

Hydrosphere

Lithosphere

Assessment:

- Print assessment either from Kmail or the file transfer window.
- Complete assessment
- Include in work samples at the end of the semester